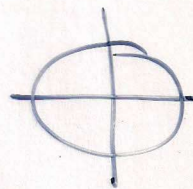
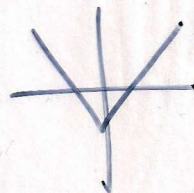
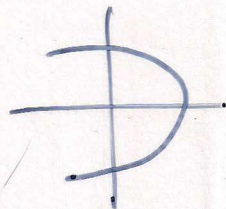
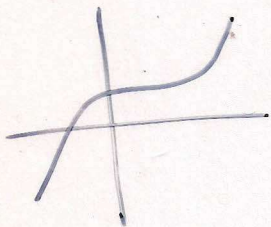


# Functions

## Graphs of functions

Pass the vertical line test.



$$f(x) = 3$$

$$f(x) = 2x$$

$$f(x) = x^2 + 1$$

$$f(x) = \sin x$$

$$f(x) = |x|$$

$$y = \tan x$$

$$y = e^x$$

$$y = \ln x$$

$$y = \begin{cases} x^2, & x \leq 1 \\ 2x+1, & x > 1 \end{cases}$$

$$y = \lfloor x \rfloor$$

$$y = \lfloor x - 1 \rfloor$$

Domains / Ranges